

XAL at SNS Status Report - 2012

Thomas Pelaia II, Ph.D.

XAL Workshop 2012

December 13, 2012



Developers at SNS

- **Active**

- **Chris Allen**
- **Timofey Gorlov**
- **Tom Pelaia**

- **Occasional**

- **Sarah Cousineau**
- **John Galambos**
- **Andrei Shishlo**
- **Alexander Zhukov**

Roadmap

- **Continue to support XAL for Operations**
- **Push changes to Open XAL**

Git Source Control

Migrated from Subversion

- **Staged Migrated to Git (late 2011)**
- **Planned migration accelerated by cyber event**
- **Advantages versus Subversion**
 - ✓ **Distributed version control**
 - ✓ **Works when network unavailable**
 - ✓ **Better workflow**
 - ✓ **Easier, more powerful branching**
 - ✓ **Excellent man pages**

XAL Development Efforts

- **Software Maintenance**
- **New Applications and Services**
- **New Core Tools**

Recent Applications and Services

- **Profile Tools and Analysis**
- **Linac Tune-up**
- **Errant Beam Capture Service**

Recent Core Additions

- **Dispatch package**
- **Key-Value Table Model**
- **Differentiable Operation**
- **JSON Coder**
- **Batch Channel Operations**
 - **Connect, Get**
- **Application Framework Enhancements**

Dispatch Package

gov.sns.tools.dispatch

- **Port of open source libdispatch to Java**
 - <http://libdispatch.macosforge.org>
- **Provides concurrency API**
 - Global queues including Main queue
 - Custom queues
 - Serial and concurrent queues
 - Sync and Async dispatch operations
 - Dispatch Timer
- **Unifies several Java concurrency APIs**

Dispatch vs. Java Concurrent

	Dispatch	Java Concurrent
Public Class Count	3	26
Declarative	✓	X
Unified API	✓	X
Queue Barrier	✓	X
Timers	✓	X
Group Synchronization	✓	X

Key-Value Table Model

gov.sns.tools.swing

- **Record based table model**
 - List data source
 - One row per record
 - Key Path for each column
 - Smart, customizable column titles
 - Key Path option for editable state
 - Automatic null handling
 - Edit event dispatching
 - Support for Map records
- **High Performance Live Record Filtering**

Example Key-Value Table Model Launcher Application

Create Table Model

```
APP_TABLE_MODEL = new KeyValueFilteredTableModel<App>( new ArrayList<App>(), "label",  
"rule.kind", "notes" );  
APP_TABLE_MODEL.setMatchingKeyPaths( "label", "rule.kind", "file.name", "notes" );  
APP_TABLE_MODEL.setColumnName( "rule.kind", "Kind" );  
APP_TABLE_MODEL.setInputFilterComponent( FILTER_FIELD );
```

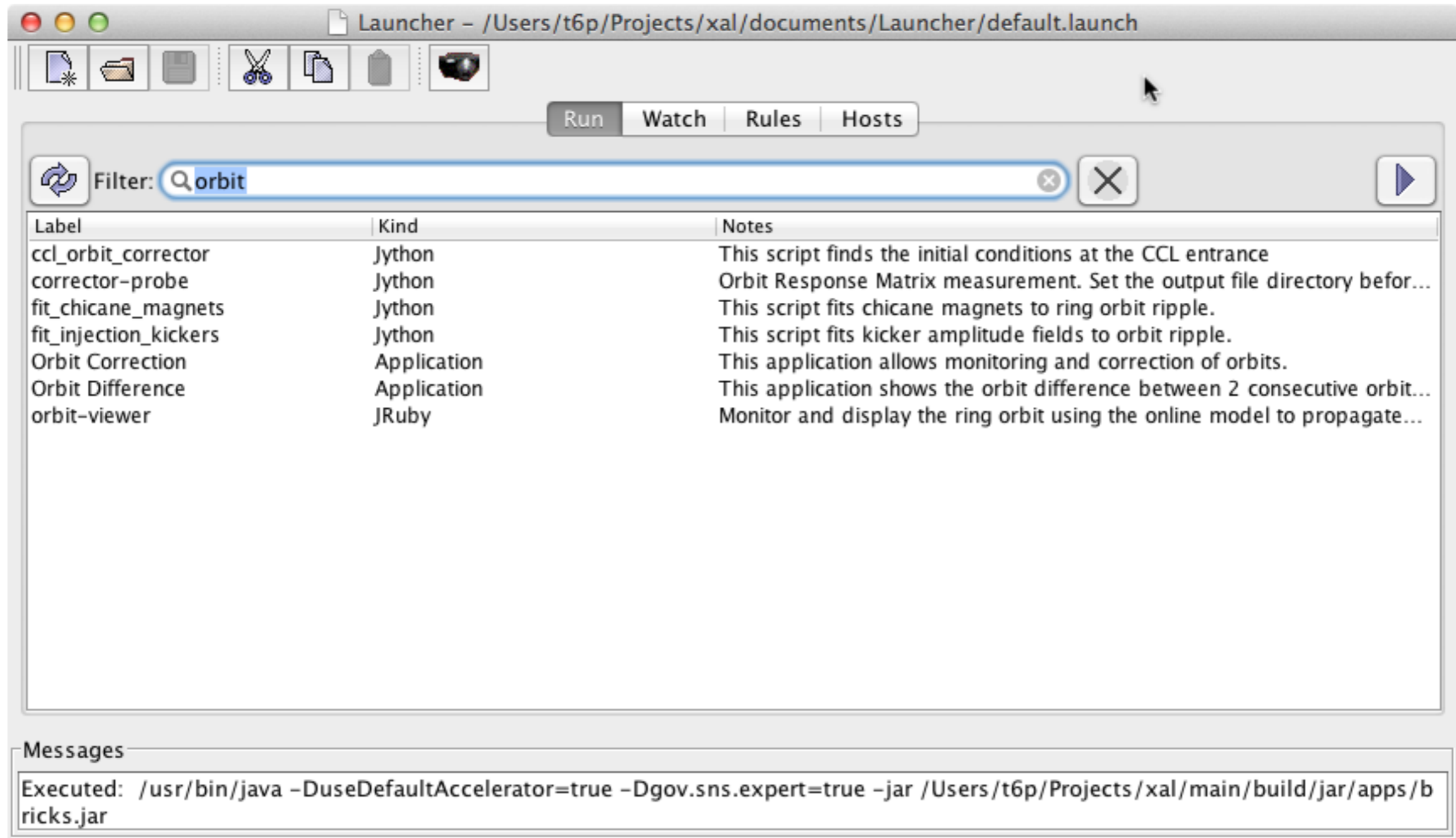
Set Records

```
final List<App> applications = MODEL.getApplications();  
APP_TABLE_MODEL.setRecords( applications );
```

Get a Record for a Row

```
final int modelRow = APP_TABLE.convertRowIndexToModel( selectedRow );  
final App application = APP_TABLE_MODEL.getRecordAtRow( modelRow );
```

Launcher with Application Table



The screenshot shows a window titled "Launcher - /Users/t6p/Projects/xal/documents/Launcher/default.launch". The window has a toolbar with icons for file operations and a menu bar with "Run", "Watch", "Rules", and "Hosts". A search filter "orbit" is applied to a table of applications. The table has three columns: "Label", "Kind", and "Notes". Below the table is a "Messages" section showing the command used to execute the application.

Label	Kind	Notes
ccl_orbit_corrector	Jython	This script finds the initial conditions at the CCL entrance
corrector-probe	Jython	Orbit Response Matrix measurement. Set the output file directory befor...
fit_chicane_magnets	Jython	This script fits chicane magnets to ring orbit ripple.
fit_injection_kickers	Jython	This script fits kicker amplitude fields to orbit ripple.
Orbit Correction	Application	This application allows monitoring and correction of orbits.
Orbit Difference	Application	This application shows the orbit difference between 2 consecutive orbit...
orbit-viewer	JRuby	Monitor and display the ring orbit using the online model to propagate...

Messages

```
Executed: /usr/bin/java -DuseDefaultAccelerator=true -Dgov.sns.expert=true -jar /Users/t6p/Projects/xal/main/build/jar/apps/b  
ricks.jar
```

Key-Value Record Selector

- **Dialog with embedded table of records for selection**
- **Quick filtering**
- **Configurable selection model**

Example Key-Value Record Selector

PV Logger Application

Create Record Selector

```
_channelSelector = KeyValueRecordSelector.getInstanceWithFilterPrompt( signals,  
mainWindow, "Add Selected Channels", "Channel Filter", "toString" );  
_channelSelector.getRecordTableModel().setColumnName( "toString", "Channel" );
```

Show the Dialog and Get Selections

```
final List<String> channelNames = _channelSelector.showDialog();
```

Generic Swing Controllers

gov.sns.tools.swing.controller

- **Extends key-value binding to other Swing components**
 - Button, Label, Text Field, List, Table
- **Reduces boilerplate code**
- **Still Experimental**
- **Not ported to Open XAL**
- **Should implement Key-Path Property Change Propagation mechanism**

Differentiable Operation

- **Stack based operations**
- **Symbolic Multivariate differentiation**
- **Covers most Java Math functions**
- **Template with Variable Substitution**
 - Handy for indexed repetitions
- **Foundation for Error Propagation, Fitting and Optimization**

JSON Coder

gov.sns.tools.coding.json

- **Implements Coder interface**
- **Code and Decode JSON**
- **Many Default Supported Types**
 - **boolean, byte, char, short, int, long, float, double**
 - **null, String, Date**
 - **Array, Vector, ArrayList**
 - **HashMap, Hashtable (string keys)**
 - **StackTraceElement, RuntimeException**
 - **Serializable**
- **Custom type support**

Example JSON Coding

JRuby Testing

Encode JSON

```
json = JSONCoder.defaultEncode( object )
```

Decode JSON

```
regen = JSONCoder.defaultDecode( json )
```

Batch Channel Connect

- **Submit connection requests for batch of channels**
- **Optionally block with timeout until all connections are resolved**
- **Listeners get notified when connection status changes for a channel**
- **Get exception for a channel**

Batch Channel Get

- **Submit Get requests for batch of channels**
 - Efficient get requests processed in parallel
 - Get value or value, status and timestamp
- **Request connections as needed**
- **Optionally block with timeout until all requests are resolved**
- **Listeners get notified when get requests complete for a channel**
- **Get record or exception for a channel**

Example Batch Channel Get Request

Create Get Request and Submit

```
final BatchGetValueTimeRequest batchAsyncRequest = new  
BatchGetValueTimeRequest( batchAsyncChannels );  
batchAsyncRequest.submit(); // submit the request now to capture without delay
```

Wait for Completion

```
batchAsyncRequest.waitForCompletion( _batchRequestTimeout );
```

Get a Record for a Channel

```
final ChannelTimeRecord record = batchAsyncRequest.getRecord( channel );
```

Application Framework

New Features

- **Document Templates**
- **Startup dialog**
- **Document History**
- **Menu definition additions**

Document Templates

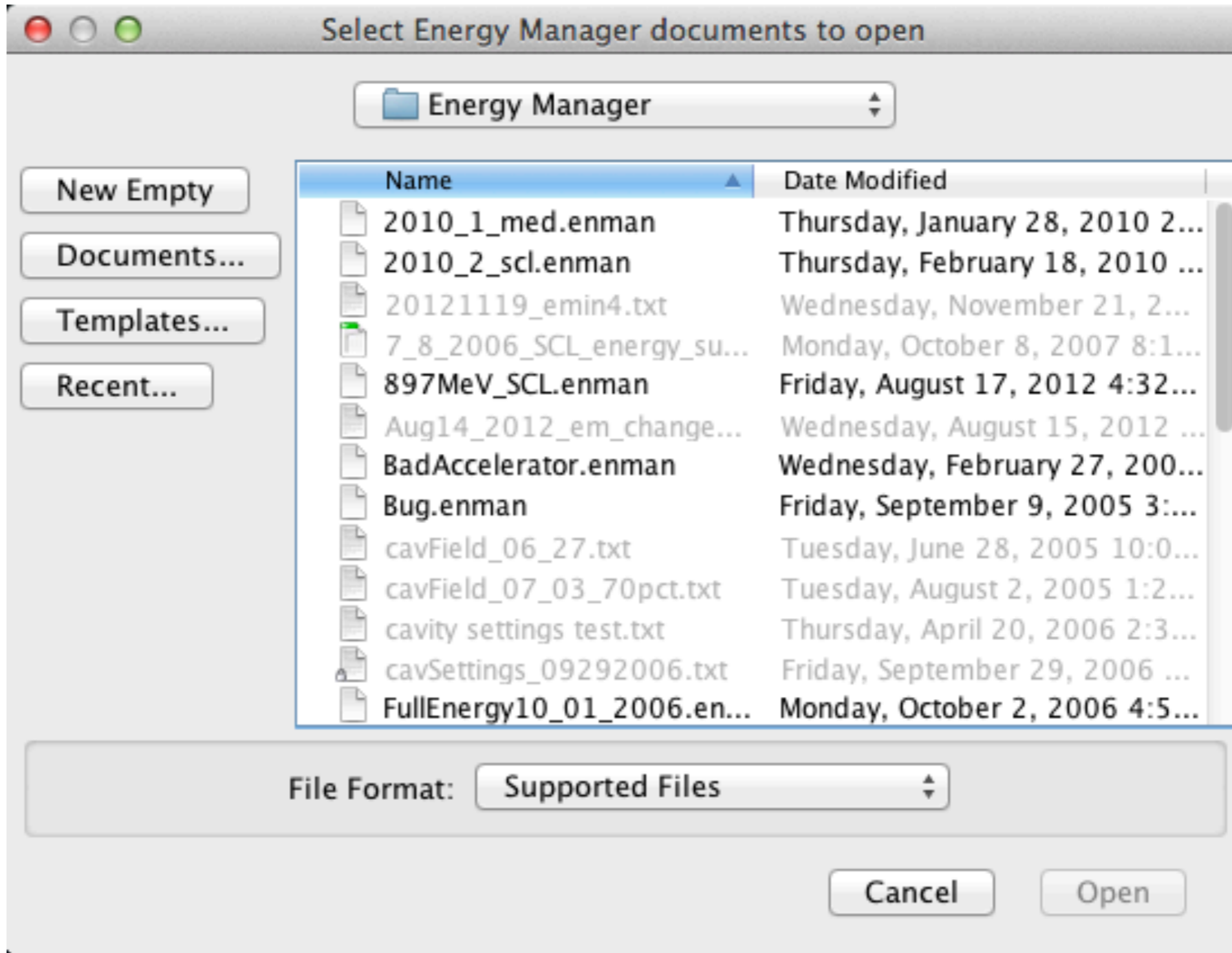
- **Easy reuse of a configuration**
- **Opening any document as a template creates a copy**
- **Templates subdirectory reserved for templates**

Application Startup Dialog

- **Automatic for document based applications**
 - **Configurable**
- **Quick Access to Templates, Recent Documents, Documents**
- **Avoid creating unused empty documents**

Example Startup Dialog

Energy Manager



Document History

- **Timestamped document copy recorded with every save operation**
 - Saved under `.versions` directory in application's document folder
 - Any version of a document can be opened using “Open Version...” menu item in the File menu
- **Ideal for manual logging**
- **Allows for data recovery**
- **Reduces file clutter in document directory**
- **Consistent timestamp naming for documents**

New Menu Definition Features

- **Dot notation replaces underscores for field reference**
 - More natural syntax
 - Old notation deprecated but still supported
 - Most applications modified to use new notation
 - Only notation supported in Open XAL
- **Positional anchors for relative placement of menus and menu items**
 - Position specified using “before” and “after”
 - Eliminates redundancy
 - Embraces future additions

Example: Orbit Correction Menubar

Old Style

```
# customize the menubar
menubar = file edit accelerator orbit view window help

# define the orbit menu items
orbit.menu = add_live add_diff add_snapshot add_logged
import_document_orbit define_orbit -
display_flatten_window

# define the orbit menu label
orbit.label = Orbits

# define Special menu item labels
add_live.label = Add Live Orbit
add_diff.label = Add Difference Orbit
add_snapshot.label = Add Snapshot Orbit
add_logged.label = Add Logged Orbit
import_document_orbit.label = Import Document Orbit
define_orbit.label = Define Orbit
display_flatten_window.label = Flatten Orbit

# define the menu item actions
add_live.action = add-live-orbit
add_diff.action = add-diff-orbit
add_snapshot.action = add-snapshot-orbit
add_logged.action = add-logged-orbit
import_document_orbit.action = import-document-orbit
define_orbit.action = define-orbit
display_flatten_window.action = display-flatten-window
```

Positional

```
# customize the menubar
accelerator.after = orbit

# define the orbit menu items
orbit.menu = add_live add_diff add_snapshot add_logged
import_document_orbit define_orbit -
display_flatten_window

# define the orbit menu label
orbit.label = Orbits

# define Special menu item labels
add_live.label = Add Live Orbit
add_diff.label = Add Difference Orbit
add_snapshot.label = Add Snapshot Orbit
add_logged.label = Add Logged Orbit
import_document_orbit.label = Import Document Orbit
define_orbit.label = Define Orbit
display_flatten_window.label = Flatten Orbit

# define the menu item actions
add_live.action = add-live-orbit
add_diff.action = add-diff-orbit
add_snapshot.action = add-snapshot-orbit
add_logged.action = add-logged-orbit
import_document_orbit.action = import-document-orbit
define_orbit.action = define-orbit
display_flatten_window.action = display-flatten-window
```

Main File Edit Accelerator Orbits View Window Help

Summary

- **Maintenance of XAL**
- **Continued XAL Development**
- **Porting to Open XAL**
- **Will Transition from XAL to Open XAL**